



University of Amsterdam
Programming Research Group

Software Engineering with Process Algebra:
Modelling Client / Server Architectures

B. Diertens

B. Diertens

Programming Research Group
Faculty of Science
University of Amsterdam

Kruislaan 403
1098 SJ Amsterdam
The Netherlands

tel. +31 20 525.7593
e-mail: bobd@science.uva.nl

Programming Research Group Electronic Report Series

Software Engineering with Process Algebra: Modelling Client / Server Architectures

Bob Diertens

Programming Research Group, Faculty of Science, University of Amsterdam

ABSTRACT

In previous work we described how the process algebra based language PSF can be used in software engineering, using the ToolBus, a coordination architecture also based on process algebra, as implementation model. We also described this software development process more formally by presenting the tools we use in this process in a CASE setting, leading to the PSF-ToolBus software engineering environment. In this article we summarize that work and describe a similar software development process for implementation of software systems using a client/server model and present this in a CASE setting as well.

Keywords: process algebra, software engineering, software architecture, client server architecture, webservice

1. Introduction

In previous work [9-11] we investigated the use of process algebra, in particular the process algebra based language PSF (Process Specification Formalism), in the software development process. We used the ToolBus, a process algebra based coordination architecture, as implementation model. We give a description of PSF and the ToolBus in sections 1.1 and 1.2. We described this software development process more formally in [12] by presenting the tools we use in the development process in a Computer-Aided Software Engineering Environment (CASE) setting.

In the work mentioned above we only used the ToolBus as target system model for implementing software systems. Our goal is to support software development with process algebra for other system models as well. In this article we describe how client / server based architectures can be developed using process algebra. Furthermore, we describe this process in a CASE setting leading to a software engineering environment.

In client / server architecture based software systems tasks are partitioned between service providers (servers) and service requesters (clients). Such software systems consist of one or more clients that make use of services provided by one or more servers. But a server itself can also act as a client making requests to one or more other servers. In this way, a hierarchy is formed in which clients and servers on a lower level can make requests to servers on higher levels.

In the remainder of this section we give brief descriptions of PSF and the ToolBus. In section 2 we describe our software engineering process with PSF and the software engineering environment supporting this process. In section 3 we show how the modelling of client / server architectures in PSF can be achieved and in section 5 we describe this process more formally by presenting it in a CASE setting, leading to the PSF-Client / Server Software Engineering Environment. We briefly discuss the implementation of applications based on the specifications of client / server architectures in section 5. We end with sections on related work and conclusions.

1.1 PSF

PSF is based on ACP (Algebra of Communicating Processes) [3] and ASF (Algebraic Specification Formalism) [4]. A description of PSF can be found in [13, 14, 20, 21]. Processes in PSF are built up from the standard process algebraic constructs: atomic actions, alternative composition $+$, sequential composition \cdot , and parallel composition \parallel . Atomic actions and processes are parameterized with data parameters.

PSF is accompanied by a Toolkit containing among other components a compiler and a simulator that can

be coupled to an animation [15]. The tools operate around the tool intermediate language (TIL) [22]. Animations can either be made by hand or be automatically generated from a PSF specification [16]. The animations play an important role in our software development process as they can be used to test the specifications and are very convenient in communication to other stakeholders.

1.2 ToolBus

The ToolBus [5] is a coordination architecture for software applications developed at CWI (Amsterdam) and the University of Amsterdam. It utilizes a scripting language based on process algebra to describe the communication between software tools. A ToolBus script describes a number of processes that can communicate with each other and with various tools existing outside the ToolBus. The role of the ToolBus when executing the script is to coordinate the various tools in order to perform some complex task. A language-dependent adapter that translates between the internal ToolBus data format and the data format used by the individual tools makes it possible to write every tool in the language best suited for the task(s) it has to perform.

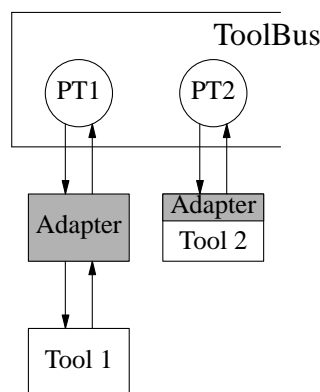


Figure 1. Model of tool and ToolBus interconnection

In Figure 1 two possible ways of connecting tools to the ToolBus are displayed. One way is to use a separate adapter and the other to have a built-in adapter. Processes inside the ToolBus can communicate with each other using the actions `snd-msg` and `rec-msg`. ToolBus processes can communicate with the tools using the actions `snd-do` and `snd-eval`. With the latter a tool is expected to send a value back which can be received by the process with the action `rec-value`. A tool can send an event to a ToolBus process which can be received with the action `rec-event`. Such an event has to be acknowledged by the ToolBus process with the action `snd-ack-event`.

2. Software Engineering with PSF

In [12], previous work on software engineering with PSF is summarized and put in a CASE setting, resulting in a software engineering environment based on process algebra. In this section we briefly describe this environment and give an example of its use.

2.1 The PSF-ToolBus Software Engineering Environment

In Figure 2 we show the PSF-ToolBus software engineering environment that can be used for the development of ToolBus applications. Objects to be specified are presented as **bold boxes**, workbench tools as **ellipses**, and generated objects as *slanted boxes*. The environment consist of two workbenches, one for the specification of the architecture of the software system, and one for the specification of the software system as ToolBus application. Each workbench uses a library of PSF modules in which the primitives for this particular abstraction level are specified. On each level the connection of the components into a system and the incorporation in an environment is generated from the components.

The development of a software system starts with the specification of the architecture of the software

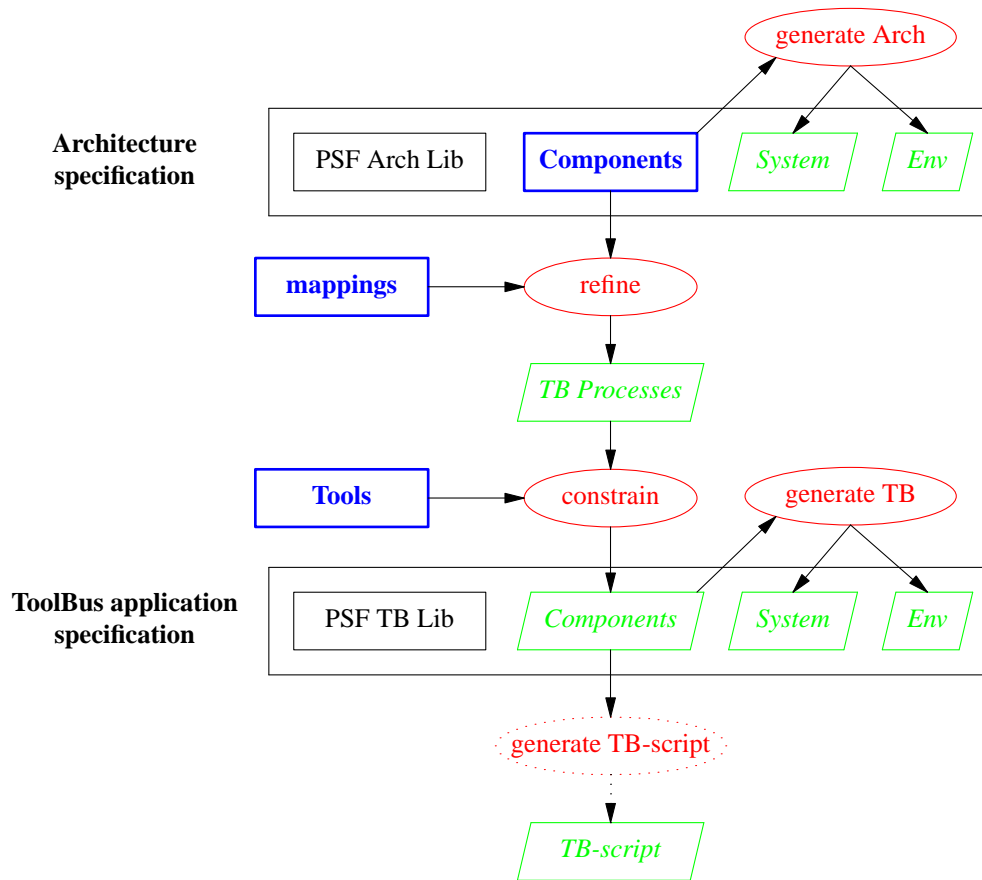


Figure 2. The PSF-ToolBus Software Engineering Environment

systems from which a ToolBus application specification can be obtained by applying vertical and horizontal implementation techniques based on our process algebra. Vertical implementation is the refining of actions in the architecture specification by mapping these actions onto sequences of actions. Horizontal implementation is the constraining of the processes that are the result of the vertical implementation with processes that specify the tools. A process can be constrained by another process by putting the processes in parallel with each other and enforcing communication between the two by encapsulation.

From the specification of the ToolBus processes in the ToolBus application specification a ToolBus script can be derived that together with the implementation for the tools form a ToolBus application. The derivation of the ToolBus script is not done automatically. The problem here is that PSF specifications use recursion for setting the state of a process, and the ToolBus cannot handle recursive processes.

2.2 Example

We show our development process for a small application. In this example, Component1 can either send a message to Tool2 and then wait for an acknowledgement from Component2, or it can send a quit after which the application will shutdown.

Architecture Specification

We first specify a module for the data and id's we use.

```

data module Data
begin
  exports
  begin

```

```
    functions
      message : → DATA
      ack : → DATA
      quit : → DATA
      c1 : → ID
      c2 : → ID
    end
  imports
    ArchitectureTypes
  end Data
```

We then specify the system of our application.

```
process module ApplicationSystem
begin
  exports
  begin
    processes
      ApplicationSystem
    end
  imports
    Data,
    ArchitecturePrimitives
  atoms
    send-message
    stop
  processes
    Component1
    Component2
  definitions
    Component1 =
      send-message .
      snd(c1 >> c2, message) .
      rec(c2 >> c1, ack) .
      Component1
    + stop .
      snd-quit
    Component2 =
      rec(c1 >> c2, message) .
      snd(c2 >> c1, ack) .
      Component2
    ApplicationSystem = Component1 || Component2
  end ApplicationSystem
```

The `snd-quit` in the process definition for `Component1` communicates with the architecture environment followed by a disrupt to end all processes.

Next, we put the system in the architecture environment by means of binding the main process to the `System` parameter of the environment.

```
process module Application
begin
  imports
    Architecture {
      System bound by [
        System → ApplicationSystem
      ] to ApplicationSystem
      renamed by [
        Architecture → Application
      ]
    }
  end Application
```

The generated animation of the architecture is shown in Figure 3. Here, `Component1` has just sent a message to `Component2`, which is ready to send an acknowledgement back. Each box represents an encapsulation of the processes inside the box, and a darker ellipse is a process which is enabled to perform an action in the given state.

The module mechanism of PSF can be used to build more complex components hiding internal actions and sub-processes. With the use of parameterization it is even possible to make several instances of a component.

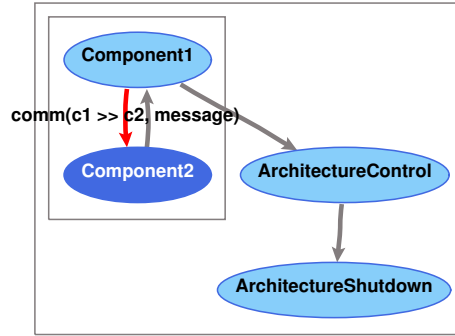


Figure 3. Animation of an example architecture

ToolBus Application Specification

We make a ToolBus application specification for our example in the form shown in Figure 1. By refining the specification of the architecture we obtain a ToolBus application specification for our example. Take the process Component1 from the architecture specification of our toy example.

```

Component1 =
  send-message .
  snd(c1 >> c2, message) .
  rec(c2 >> c1, ack) .
  Component1
+ stop .
  snd-quit
  
```

We can make a virtual implementation by applying the mapping consisting of the refinements

```

snd(c1 >> c2, message) → tb-snd-msg(t1, t2, tbterm(message))
rec(c2 >> c1, ack)     → tb-rec-msg(t2, t1, tbterm(ack)) .
                       tb-snd-ack-event(T1, tbterm(message))
snd-quit               → snd-tb-shutdown
  
```

and the renamings of the local actions

```

send-message          → tb-rec-event(T1, tbterm(message))
stop                  → tb-rec-event(T1, tbterm(quit))
  
```

Renaming the process Component1 into PT1 gives the following result.

```

PT1 =
  tb-rec-event(T1, tbterm(message)) .
  tb-snd-msg(t1, t2, tbterm(message)) .
  tb-rec-msg(t2, t1, tbterm(ack)) .
  tb-snd-ack-event(T1, tbterm(message)) .
  PT1
+ tb-rec-event(T1, tbterm(quit)) .
  snd-tb-shutdown
  
```

We can show that Component1 and PT1 are vertical bisimilar. Applying the renamings on process Component1 and hiding of the actions to be refined results in

```

Component1' =
  tb-rec-event(T1, tbterm(message)) . τ . τ . Component1'
+ tb-rec-event(T1, tbterm(quit)) . τ
  
```

Hiding of the actions in the refinements in process PT1 results in

```

PT1' =
  tb-rec-event(T1, tbterm(message)) . τ . τ . τ . PT1'
+ tb-rec-event(T1, tbterm(quit)) . τ
  
```

It follows that Component1' and PT1' are rooted weak bisimilar.

We now make a horizontal implementation by constraining PT1 with Tool1Adapter.

```

PTool1 = Tool1Adapter || PT1
  
```

Tool1Adapter is itself an constraining of AdapterTool1 with Tool1 for which we give the definitions below.

```

AdapterTool1 =
  tooladapter-rec(message) .
  tooltb-snd-event(tbterm(message)) .
  tooltb-rec-ack-event(tbterm(message)) .
  tooladapter-snd(ack) .
  AdapterTool1
+ tooladapter-rec(quit) .
  tooltb-snd-event(tbterm(quit))
Tool1 =
  snd(message) .
  rec(ack) .
  Tool1
+ snd(quit)

```

In this constraint, the communication between the actions tooladapter-rec and tooladapter-snd of AdapterTool1 and the actions snd and rec of Tool1 are enforced.

An implementation for Component2 can be obtained in a similar way. A generated animation is shown in Figure 4, in which AdapterTool1 just sent a message it had received from Tool1, to ToolBus process PT1.

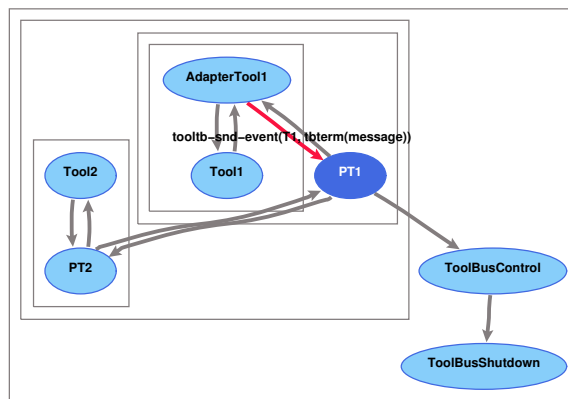


Figure 4. Animation of the ToolBus specification example

Implementation

The implementation consists of three Tcl/Tk [29] programs (Tool1, its adapter, and Tool2), and a ToolBus script. A screendump of this application at work together with the viewer of the ToolBus is shown in Figure 5. With the viewer it is possible to step through the execution of the ToolBus script and view the variables of the individual processes inside the ToolBus. The ToolBus script is shown below. The execute actions in the ToolBus script correspond to starting the adapter for Tool1 and starting Tool2 in parallel with the processes PT1 and PT2 respectively.

```

process PT1 is
let
  T1: toolladapter
in
  execute(toolladapter, T1?) .
  (
    rec-event(T1, message) .
    snd-msg(t1, t2, message) .
    rec-msg(t2, t1, ack) .
    snd-ack-event(T1, message)
  + rec-event(T1, quit) .
    shutdown("")
  ) * delta
endlet
process PT2 is
let
  T2: tool2

```

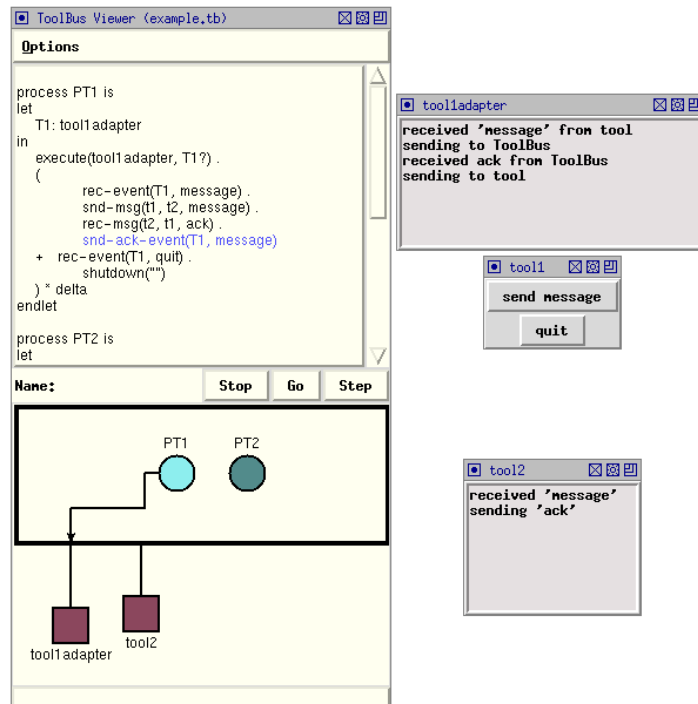



Figure 5. Screenshot of the example as ToolBus application with viewer

```
in
  execute(tool2, T2?) .
  (
    rec-msg(t1, t2, message) .
    snd-eval(T2, eval(message)) .
    rec-value(T2, value(ack)) .
    snd-msg(t2, t1, ack)
  ) * delta
endlet
tool tool1adapter is { command = "wish-adapter -script tool1adapter.tcl" }
tool tool2 is { command = "wish-adapter -script tool2.tcl" }
toolbus(PT1, PT2)
```

The processes in the ToolBus script use iteration (*, where P * **delta** repeats P infinitely) and the processes in the PSF specification use recursion. In PSF it is also possible to use iteration in this case, since the processes have no arguments to hold the current state. On the other hand, in PSF it is not possible to define variables for storing a global state, so when it is necessary to hold the current state, this must be done through the arguments of a process and be formalized via recursion.

Following the description of the ToolBus processes is the description of how to execute the tools by the execute actions. The last line of the ToolBus script starts the processes PT1 and PT2 in parallel.

3. Modelling Client/Server Architectures

In this section we investigate the development of implementations based on a client/server architecture from an architecture specification in process algebra. The goal is to develop a software engineering environment for the development of software systems based on a client/server architecture, similar to the PSF-ToolBus software engineering environment described in section 2.

We do this using an application consisting of an operator which can request primitive operations to be performed on some data. We extend this application with basic operations that are build upon primitive operations, and with complex operations build upon basic and primitive operations. The hierarchy of clients and servers is shown in Figure 6.

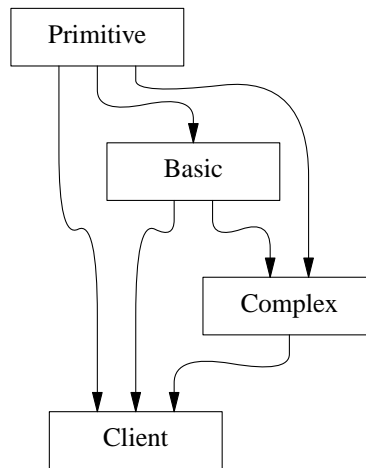


Figure 6. Hierachy of clients and servers

3.1 Architecture Specification

We start with the specification of the operator in its most simple form. In this form it can input some data, perform a primitive operation, and stop. After stopping, a `snd-quit` is send to the architecture environment in which this specification is put.

```
process module Operator
begin
  exports
  begin
    processes
      Operator
    end
  end
  imports
    ArchitecturePrimitives
  atoms
    input-data
    primitive-operation
    stop
  definitions
    Operator =
      (
        input-data
        + primitive-operation
        + stop .
        + snd-quit
      ) * delta
  end Operator
```

We refine the `primitive-operation` by adding a sequence of **skip** (the PSF equivalent of τ) actions to it with the use of the algebraic law $a. \tau = a$. These **skip** actions are replaced with `snd` and `rec` actions for communication with another process which provides the services for the primitive operations. Our new architecture is given below with the specification of three modules. The first specifying the necessary data used by the other two.

```
data module ApplicationData
begin
  exports
  begin
    functions
      operator : → ID
      primitive : → ID
      primitive-operation : → DATA
      result : → DATA
    end
  end
  imports
```

```
ArchitectureTypes
end ApplicationData
```

For convenience we only give the process definitions representing the operator and the process providing the services.

```
Operator =
(
  input-data
+ primitive-operation .
  snd(operator, primitive, primitive-operation) .
  rec(primitive, operator, result)
+ stop .
  snd-quit
) * delta

Primitive =
(
  rec(operator, primitive, primitive-operation) .
  snd(primitive, operator, result)
) * delta
```

We extend our architecture specification with basic operations. We add the necessary data to the module ApplicationData and the following alternative sequence of actions to the iteration loop in module Operator.

```
+ basic-operation .
  snd(operator, basic, basic-operation) .
  rec(basic, operator, result)
```

We complete the extension with the addition of module Basic containing the following process definition.

```
Basic =
(
  rec(operator, basic, basic-operation) .
  snd(basic, operator, result)
) * delta
```

A basic operation is build up from primitive operations. Therefore we extend the `rec` action with the use of the algebraic law $a. \tau = a$ and refine this into the computation of basic operations using services provided by the Primitive process.

```
Basic =
(
  rec(operator, basic, basic-operation) .
  (
    (
      compute-basic .
      snd(basic, primitive, primitive-operation) .
      rec(primitive, basic, result)
    ) *
    result-basic .
    snd(basic, c, result)
  )
) * delta
```

The inner loop looks similar to the process Operator with only primitive operations. To serve the Basic process, we extend the Primitive process.

```
Primitive =
(
  rec(operator, primitive, primitive-operation) .
  snd(primitive, operator, result)
+ rec(basic, primitive, primitive-operation) .
  snd(primitive, basic, result)
) * delta
```

We can generalize this using a sum construction.

```
Primitive =
sum(c in ID,
  rec(c, primitive, primitive-operation) .
  snd(primitive, c, result)
) * delta
```

In a similar way we can add complex operations that are build up from basic and primitive operations.

```

Complex =
(
  rec(operator, complex, complex-operation) .
  (
    (
      compute-complex-primitive .
      snd(complex, primitive, primitive-operation) .
      rec(primitive, complex, result)
    + compute-complex-basic .
      snd(complex, basic, basic-operation) .
      rec(basic, complex, result)
    ) *
    result-complex .
    snd(complex, operator, result)
  )
) * delta

```

And we generalize process Basic with a sum construction as we did for the process Primitive.

An animation of the complete architecture of the application is shown in Figure 7.

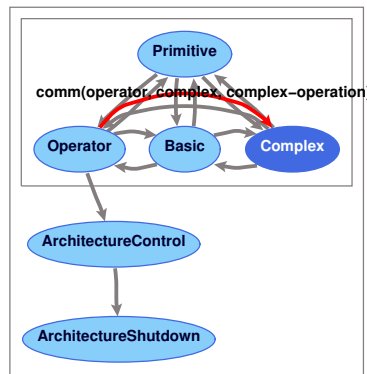


Figure 7. Animation of the application architecture

3.2 Client/Server Architecture Specification

Going back to our application consisting only of the processes Operator and Primitive we see that one act as a client and the other as a server. We can hide the fact that the primitive operations are performed by a server through separating the communication with the server from the operator. We specify a client interface.

```

C-I(client, server) =
(
  sum(s in SERVICE,
    c-rec-call(client, server, s) .
    cs-snd-request(client, server, s)
  ) .
  sum(r in RESULT,
    cs-rec-result(server, client, r) .
    c-snd-return(server, client, r)
  )
) * delta

```

The operator can now be specified as a client as follows.

```

C-Operator =
  C-I(operator, primitive)
  || Operator
Operator =
(
  input-data
+ primitive-operation .
  c-snd-call(primitive, primitive-operation) .

```

```
    c-rec-return(result)
+ stop .
  snd-quit
) * delta
```

The operator as client is the constraining of the client interface C-I with the process Operator. Communication between these processes takes place through the set of client primitives consisting of the actions c-snd-call, c-rec-call, c-snd-return, and c-rec-return.

We can also hide the communication of the server with the client from the execution of the services.

```
S-I(server) =
  sum(c in ID,
    sum(s in SERVICE,
      cs-rec-request(c, server, s) .
      s-snd-call(server, s)
    ) .
    sum(r in RESULT,
      s-rec-return(server, r) .
      cs-snd-result(server, c, r)
    )
  ) * delta
```

The primitive server can then be specified as the constraining of the server interface with the process Primitive defined as follows.

```
S-Primitive =
  S-I(primitive)
  || Primitive
Primitive =
  (
    s-rec-call(primitive-operation) .
    s-snd-return(result)
  ) * delta
```

Communication between these processes takes place through the set of server primitive consisting of the actions s-snd-call, s-rec-call, s-snd-return, and s-rec-return.

Our application is formed by combining the processes C-Operator and S-Primitive which communicate through the set of client/server primitives consisting of the actions cs-snd-request, cs-rec-request, cs-snd-result, and cs-rec-result.

We have build a PSF library supporting client/server architecture specifications. This library is similar in setup as the PSF Architecture Library and the PSF ToolBus library. It contains parameterized modules for the client and server interface processes used above. The complete specification of this library can be found in Appendix A.

The processes Operator and Primitive are the result of applying the following mappings on the processes in the architecture specification.

```
snd(operator, $1, $2) → c-snd-call($1, $2)
rec($1, operator, result) →
    c-rec-return(result)

rec($1, primitive, primitive-operation) →
    s-rec-call(primitive-operation)
snd(primitive, $1, result) →
    s-snd-return(result)
```

Below we give the specification of our application with the use of the PSF Client/Server Architecture Library. The processes Operator and Primitive are defined in separate modules, which are not shown here.

```
process module C-Operator
begin
  exports
  begin
    processes
    C-Operator
  end
end
```

```
imports
  ApplicationData,
  NewC-I {
    Name bound by [
      client → operator,
      server → primitive
    ] to ApplicationData
  },
  Operator
definitions
  C-Operator =
    C-I(operator, primitive)
    || Operator
end C-Operator

process module S-Primitive
begin
  exports
  begin
    processes
      S-Primitive
    end
  imports
    ApplicationData,
    S-I {
      Name bound by [
        server → primitive
      ] to ApplicationData
    },
    Primitive
  definitions
    S-Primitive =
      S-I(primitive)
      || Primitive
  end S-Primitive
```

We combine the two to form the application system.

```
process module ApplicationSystem
begin
  exports
  begin
    processes
      ApplicationSystem
    end
  imports
    NewServer {
      Server bound by [
        Server → S-Primitive
      ] to S-Primitive
      renamed by [
        CS-Server → CS-Primitive
      ]
    },
    NewClient {
      Client bound by [
        Client → C-Operator
      ] to C-Operator
      renamed by [
        CS-Client → CS-Operator
      ]
    }
  definitions
    ApplicationSystem =
      CS-Primitive
      || CS-Operator
  end ApplicationSystem
```

And finally we put the application system in a client/server environment.

```
process module Application
begin
  imports
```

```
ClientServer {
  System bound by [
    System → ApplicationSystem
  ] to ApplicationSystem
  renamed by [
    ClientServer → Application
  ]
}
end Application
```

We extend the application with a server for the basic operations. First, we add a client interface for communication with the primitive operation server.

```
process module C-Basic
begin
  exports
  begin
    processes
    C-Basic
  end
  imports
  ApplicationData,
  ServerPrimitives,
  NewC-I {
    Name bound by [
      client → basic,
      server → primitive
    ] to ApplicationData
  },
  Basic
  processes
  Services
  definitions
  C-Basic =
    C-I(basic, primitive)
    || Basic
end C-Basic
```

To the resulting client we add a server interface.

```
process module S-Basic
begin
  exports
  begin
    processes
    S-Basic
  end
  imports
  S-I {
    Name bound by [
      server → basic
    ] to ApplicationData
  },
  NewClient {
    Client bound by [
      Client → C-Basic
    ] to C-Basic
    renamed by [
      CS-Client → SC-Basic
    ]
  }
  definitions
  S-Basic =
    S-I(basic)
    || SC-Basic
end S-Basic
```

It is also possible to add the server interface first and then add a client interface to the result. The basic operation server can now be added to `ApplicationSystem` through the import of the library module `NewServer` and binding of its parameter to the process `S-Basic`.

The application can be extended with complex operations in a similar manner as with the basic operations.

However, the server for the complex operations has two client interfaces, one for communication with the basic operations server and one for communication with the primitive operations server.

An animation of the architecture of the client/server application is shown in Figure 8.

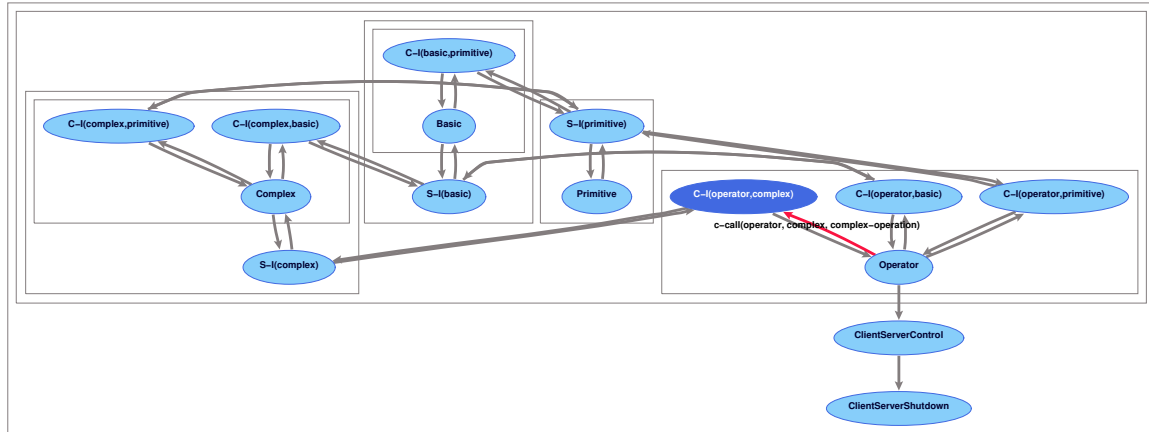


Figure 8. Animation of the client/server application architecture

4. The PSF-Client/Server Software Engineering Environment

In the previous chapter we developed an architecture specification. From this architecture we developed a specification of client/server application by applying mappings on the processes of the architecture and constraining the resulting processes with client and server interface processes. We can describe the development process as a Software Engineering Environment (SEE) consisting of two workbenches, similar to the PSF-ToolBus SEE described in section 2. This PSF-Client/Server Software Engineering Environment is shown in Figure 9. Objects to be specified are presented as **bold boxes**, workbench tools as *ellipses*, and generated objects as *slanted boxes*.

The PSF-Client/Server SEE differs from the PSF-ToolBus SEE in that here the tools are constrained with the processes that take care of the communication between the tools instead of the other way round. The reason for this is that there is no choice in how the communications between the clients and the servers take place, making it possible to apply what is called a pattern for the communications. Such a pattern is a generalized structure with parameters that are to be given a value when the pattern is applied.

Another difference is that the processes for constraining are generated from the processes that are constrained. This is possible since we can make use of a pattern for the communications between the clients and the servers. The values for the parameters of the patterns applied are deduced from the type of operations requested by the clients and servers and the knowledge of which operations a particular server can perform.

5. Client/Server Architecture based Implementations

From the client/server architecture specification a client/server based implementation can be developed. Such an implementation can be build using almost any implementation language. For a lot of implementation languages an extension package/library already exists that implements the client/server communication, hiding the encoding/decoding of the data used in the communication and hiding the details of the protocol used for the communication.

Through the hiding of the implementation details a request of a client with the receiving of the result of this request looks just like a function call. A server consist of a set functions representing the different services. The calling of these functions is done through a request handler that is hidden from the implementation of the services.

In Appendix B an example of a client/server implementation is given using Perl [32] as implementation

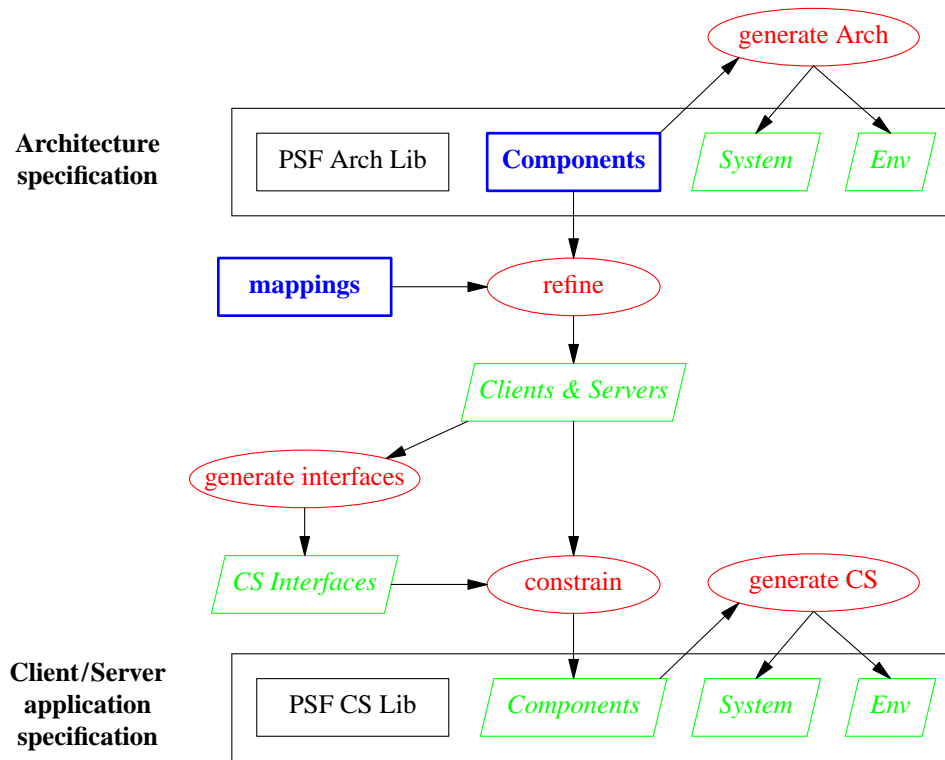


Figure 9. The PSF-Client/Server Software Engineering Environment

language combined with a package that implements web services based on Remote Procedure Calls (RPCs) and the Extensible Markup Language (XML) using the HTTP protocol. For a detailed description of programming web services with Perl we refer to [30].

6. Related Work

In the literature several architecture description languages have been proposed and some are based on a process algebra, such as *Wright* [2], *Darwin* [19], and *PADL* [6]. A comparison of several ADL's can be found in [23]. Most of the ADL's do not have any or very little support for refinement. SADL [24][25] however, has been specially designed for supporting architecture refinement. In SADL, different levels of specifications are related by refinement mappings, but the only available tool is a checker. LOTOS [7], a specification language similar to PSF, is used in [18] for the formal description of architectural styles as LOTOS patterns, and in [31] it is used as an ADL for the specification of middleware behaviour.

Formal development techniques such as B [1], VDM [17], and Z [8] provide refinement mechanisms, but they do not have support for architecture descriptions. The π -Method [26] has been built from scratch to support architecture-centric formal software engineering. It is based on the higher-order typed π -calculus and mainly built around the architecture description language π -ADL [27] and the architecture refinement language π -ARL [28]. Tool support comes in the form of a visual modeler, animator, refiner, and code synthesiser.

Modelling client/server architectures can be done in the above mentioned ADL's and development techniques. Some ADL's provide patterns/styles for clients and server. In contrast to this, we showed that in our approach different types of components and the interaction with these components can be added in a relative easy manner.

To our knowledge there is no work done on generalizing software engineering workbenches and creating software engineering environment from instances of the generalized workbenches. There are many meta

software development environments with which an environment can be created by integrating a set of existing tools. Such integration can easily be developed with the PSF-ToolBus software engineering environment as is shown in [11]. Here, an integrated development environment for PSF is created from the tools of the PSF Toolkit using the ToolBus to control the communication between the tools.

7. Conclusions

We described how software systems based on a client / server architecture can be developed with process algebra in a similar way as described in previous work for software systems based on the ToolBus. We presented this development process more formally by presenting the tools used in this process in a CASE setting, resulting in the PSF-Client/Server SEE.

The PSF-Client/Server SEE differs from the PSF-ToolBus SEE in that the the processes for constraining can be generated from the processes that describe the clients and servers. This is due to the fact that we use a pattern for the communications between the clients and the servers, and the knowledge of which operations a particular server can perform.

References

- [1] J.R. Abrial, *The B-Book: Assigning Programs to Meanings*, Cambridge University Press, 1996.
- [2] R. Allen and D. Garlan, "A Formal Basis for Architectural Connection," *ACM Transaction on Software Engineering and Methodology*, no. 6, pp. 213-249, 1997.
- [3] J.A. Bergstra and J.W. Klop, "Process algebra: specification and verification in bisimulation semantics," in *Math. & Comp. Sci. II*, ed. M. Hazewinkel, J.K. Lenstra, L.G.L.T. Meertens, CWI Monograph 4, pp. 61-94, North-Holland, Amsterdam, 1986.
- [4] J.A. Bergstra, J. Heering, and P. Klint (eds.), "The Algebraic Specification Formalism ASF," in *Algebraic Specification*, ACM Press Frontier Series, pp. 1-66, Addison-Wesley, 1989.
- [5] J.A. Bergstra and P. Klint, "The discrete time ToolBus," *Science of Computer Programming*, vol. 31, no. 2-3, pp. 205-229, July 1998.
- [6] M. Bernardo, P. Ciancarini, and L. Donatiello, "Architecting Families of Software Systems with Process Algebras," *ACM Transactions on Software Engineering and Methodology*, vol. 11, no. 4, pp. 386-426, 2002.
- [7] T. Bolognesi and E. Brinksma, "Introduction to the ISO specification language LOTOS," *Computer Networks and ISDN Systems*, vol. 14, pp. 25-59, 1987.
- [8] J. Davies and J. Woodcock, *Using Z: Specification Refinement and Proof*, International Series in Computer Science, Prentice Hall, 1996.
- [9] B. Dierens, "Software (Re-)Engineering with PSF," report PRG0505, Programming Research Group - University of Amsterdam, October 2005.
- [10] B. Dierens, "Software (Re-)Engineering with PSF II: from architecture to implementation," report PRG0609, Programming Research Group - University of Amsterdam, November 2006.
- [11] B. Dierens, "Software (Re-)Engineering with PSF III: an IDE for PSF," report PRG0708, Programming Research Group - University of Amsterdam, October 2007.
- [12] B. Dierens, "A Process Algebra Software Engineering Environment," report PRG0808, Programming Research Group - University of Amsterdam, June 2008.
- [13] B. Dierens, "New Features in PSF I - Interrupts, Disrupts, and Priorities," report P9417, Programming Research Group - University of Amsterdam, June 1994.
- [14] B. Dierens and A. Ponse, "New Features in PSF II - Iteration and Nesting," report P9425, Programming Research Group - University of Amsterdam, October 1994.

- [15] B. Diertens, "Simulation and Animation of Process Algebra Specifications," report P9713, Programming Research Group - University of Amsterdam, September 1997.
- [16] B. Diertens, "Generation of Animations for Simulation of Process Algebra Specifications," report P2003, Programming Research Group - University of Amsterdam, September 2000.
- [17] J. Fitzgerald and P. Larsen, *Modeling Systems: Practical Tools and Techniques for Software Development*, Cambridge University Press, 1998.
- [18] M. Heisel and M. Levy, "Using LOTOS Patterns to Characterize Architectural Styles," in *Proc. of the 7th International Conference on Algebraic Methodology and Software Technology*, LNCS, 1999.
- [19] J. Magee, N. Dulay, S. Eisenbach, and J. Kramer, "Specifying Distributed Software Architectures," in *Proc. of the 5th European Software Engineering Conf. (ESEC '95)*, pp. 137-153, LNCS, 1995.
- [20] S. Mauw and G.J. Veltink, "A Process Specification Formalism," in *Fundamenta Informaticae XIII (1990)*, pp. 85-139, IOS Press, 1990.
- [21] S. Mauw and G.J. Veltink (eds.), *Algebraic Specification of Communication Protocols*, Cambridge Tracts in Theoretical Computer Science 36, Cambridge University Press, 1993.
- [22] S. Mauw and G.J. Veltink, "A Tool Interface Language for PSF," report P8912, Programming Research Group - University of Amsterdam, October 1989.
- [23] N. Medvidovic and R. Taylor, "A Classification and Comparison Framework for Architecture Description Languages," *IEEE Transactions on Software Engineering*, vol. 26, no. 1, pp. 70-93, 2000.
- [24] M. Moriconi, X. Qian, and R.A. Riemenschneider, "Correct Architecture Refinement," *IEEE Transactions on Software Engineering*, vol. 21, no. 4, 1995.
- [25] M. Moriconi and R.A. Riemenschneider, "Introduction to SADL 1.0: A Language for Specifying Software Architecture Hierarchies," technical report SRI-CSL-97-01, Computer Science Laboratory - SRI international, March 1997.
- [26] F. Oquendo, " π -Method: A Model-Driven Formal Method for Architecture-Centric Software Engineering," *ACM Software Engineering Notes*, vol. 31, no. 3, 2006.
- [27] F. Oquendo, " π -ADL: An Architecture Description Language based on the Higher Order Typed π -Calculus for Specifying Dynamic and Mobile Software Architectures," *ACM Software Engineering Notes*, vol. 20, no. 3, 2004.
- [28] F. Oquendo, " π -ARL: An Architecture Refinement Language for Formally Modelling the Stepwise Refinement of Software Architectures," *ACM Software Engineering Notes*, vol. 29, no. 5, 2004.
- [29] J.K. Ousterhout, *Tcl and the Tk Toolkit*, Addison-Wesley, 1994.
- [30] R.J. Ray and P. Kulchenko, *Programming Web Services with Perl*, O'Reilly & Associates, Inc., 2003.
- [31] N.S. Rosa and P.R.F. Cunha, "A Software Architecture-Based Approach for Formalising Middleware Behaviour," *Electronic Notes in Theoretical Computer Science*, vol. 108, pp. 39-51, 2004.
- [32] L. Wall, T. Christiansen, and R.L. Schwartz, *Programming Perl*, O'Reilly & Associates, Inc., 1996.

A. Client/Server Architecture Library

```
data module ClientServerTypes
begin
  exports
  begin
    sorts
      ID,
      SERVICE,
      RESULT
    end
  end ClientServerTypes

process module ClientServerPrimitives
begin
  exports
  begin
    atoms
      cs-snd-request : ID # ID # SERVICE
      cs-rec-request : ID # ID # SERVICE
      cs-request : ID # ID # SERVICE
      cs-snd-result : ID # ID # RESULT
      cs-rec-result : ID # ID # RESULT
      cs-result : ID # ID # RESULT
    end
    imports
      ClientServerTypes
    communications
      cs-snd-request(o, d, s) | cs-rec-request(o, d, s) = cs-request(o, d, s)
        for o in ID, d in ID, s in SERVICE
      cs-snd-result(o, d, r) | cs-rec-result(o, d, r) = cs-result(o, d, r)
        for o in ID, d in ID, r in RESULT
    end ClientServerPrimitives

process module ServerPrimitives
begin
  exports
  begin
    atoms
      s-snd-call : ID # SERVICE
      s-rec-call : SERVICE
      s-call : ID # SERVICE
      s-snd-return : RESULT
      s-rec-return : ID # RESULT
      s-return : ID # RESULT
    end
    imports
      ClientServerTypes
    communications
      s-snd-call(n, s) | s-rec-call(s) = s-call(n, s)
        for n in ID, s in SERVICE
      s-snd-return(r) | s-rec-return(n, r) = s-return(n, r)
        for n in ID, r in RESULT
    end ServerPrimitives

process module S-I
begin
  parameters
    Name
    begin
      functions
        server : → ID
      end Name
    exports
    begin
      processes
        S-I : ID
      end
    imports
      ClientServerPrimitives,
      ServerPrimitives
    variables
      d : → ID
  end
end
```

```
definitions
  S-I(server) =
    sum(o in ID,
      sum(s in SERVICE,
        cs-rec-request(o, server, s) .
        s-snd-call(server, s)
      ) .
      sum(r in RESULT,
        s-rec-return(server, r) .
        cs-snd-result(server, o, r)
      )
    ) * delta
end S-I

process module NewServer
begin
  parameters
    Server
  begin
    processes
      Server
    end Server
  exports
  begin
    processes
      CS-Server
    end
  imports
    ServerPrimitives
  sets
    of atoms
      ServerH = {
        s-snd-call(n, s), s-rec-call(s),
        s-snd-return(r), s-rec-return(n, r)
        | n in ID, s in SERVICE, r in RESULT
      }
  definitions
    CS-Server =
      encaps(ServerH,
        Server
      )
  end NewServer

process module ClientPrimitives
begin
  exports
  begin
    atoms
      c-snd-call : ID # SERVICE
      c-rec-call : ID # ID # SERVICE
      c-call : ID # ID # SERVICE
      c-snd-return : ID # ID # RESULT
      c-rec-return : RESULT
      c-return : ID # ID # RESULT
      snd-quit
    end
  imports
    ClientServerTypes
  communications
    c-snd-call(d, s) | c-rec-call(o, d, s) = c-call(o, d, s)
      for o in ID, d in ID, s in SERVICE
    c-snd-return(o, d, r) | c-rec-return(r) = c-return(o, d, r)
      for o in ID, d in ID, r in RESULT
  end ClientPrimitives

process module NewC-I
begin
  parameters
    Name
  begin
    functions
      client : → ID
      server : → ID
    end
  end
end
```

```
    end Name
  exports
  begin
    processes
      C-I : ID # ID
    end
  imports
    ClientServerPrimitives,
    ClientPrimitives
  variables
    o : → ID
    d : → ID
  definitions
    C-I(client, server) =
      (
        sum(s in SERVICE,
          c-rec-call(client, server, s) .
          cs-snd-request(client, server, s)
        ) .
        sum(r in RESULT,
          cs-rec-result(server, client, r) .
          c-snd-return(server, client, r)
        )
      ) * delta
  end NewC-I

process module NewClient
begin
  parameters
    Client
  begin
    processes
      Client
    end Client
  exports
  begin
    processes
      CS-Client
    end
  imports
    ClientPrimitives
  sets
    of atoms
      ClientH = {
        c-snd-call(d, s), c-rec-call(o, d, s),
        c-snd-return(o, d, r), c-rec-return(r)
        | o in ID, d in ID, s in SERVICE, r in RESULT
      }
  definitions
    CS-Client =
      encaps(ClientH,
        Client
      )
  end NewClient

process module ClientServer
begin
  parameters
    System
  begin
    processes
      System
    end System
  exports
  begin
    processes
      ClientServer
    end
  imports
    ClientServerPrimitives
  atoms
    rec-quit
    quit
```

```
snd-shutdown
rec-shutdown
shutdown
processes
ClientServerControl
ClientServerShutdown
sets
of atoms
H = {
  cs-snd-request(o, d, s), cs-rec-request(o, d, s),
  cs-snd-result(o, d, r), cs-rec-result(o, d, r)
  | o in ID, d in ID, s in SERVICE, r in RESULT
}
ClientServerH = {
  snd-quit, rec-quit,
  snd-shutdown, rec-shutdown
}
communications
snd-quit | rec-quit = quit
snd-shutdown | rec-shutdown = shutdown
definitions
ClientServer =
  encaps(ClientServerH,
    disrupt(
      encaps(H, System),
      ClientServerShutdown
    )
  || ClientServerControl
)
ClientServerControl =
  rec-quit .
  snd-shutdown
ClientServerShutdown = rec-shutdown
end ClientServer
```

B. An example implementation in Perl

We show how the application specified in section 3 can be implemented using web services. As an example we implement a calculator that can perform the operations on natural numbers. The operations consists of `successor`, `predecessor`, and `iszero` as primitive operations, `add` and `subtract` as basic operators, and `multiply` and `divide` as complex operations. As implementation language we use Perl together with the Frontier-RPC package for implementing web services based on Remote Procedure Calls (RPC) and the Extensible Markup Language (XML) using the HTTP protocol. The package completely hides the XML and HTTP protocol details from the user.

The primitive operation server can be implemented as follows.

```
use Frontier::Daemon;
use Frontier::RPC2;
my $d = Frontier::Daemon->new(
    methods => {
        succ => \&succ,
        pred => \&pred,
        iszero => \&iszero,
    },
    LocalAddr => 'localhost',
    LocalPort => 1080,
    ReuseAddr => 1,
);
sub succ {
    my $arg = shift;
    return ++ $arg;
}
sub pred {
    my $arg = shift;
    if (iszero($arg)) {
        return 0;
    } else {
        return -- $arg;
    }
}
sub iszero {
    my $arg = shift;
    return $arg == 0 ? 1 : 0;
}
```

The operator client can be implemented as follows

```
use Frontier::Client;
my $primitive = Frontier::Client->new(
    url => "http://localhost:1080/RPC2",
    debug => 0,
);
my @stack = ();
my @args;
my $r;
sub print_stack {
    my $s;
    $s = join(" ", @stack);
    print "($s)0";
}
while (1) {
    print_stack();
    print "> ";
    # read input
    $_ = <>;
    if ($_ eq "") {
        next;
    }
    # strip input
    if (/^\s*(.*\S)\s*$/) {
        $_ = $1;
    }
    if (/^\s*(\d+)\s/) { #input natural
        push @stack, $1;
    } elsif ($_ eq "++") { #primitive successor
```



```
    if ($#stack < 0) {
        print "not enough arguments0;
    } else {
        $args[0] = pop @stack;
        $r = $primitive->call('succ', @args);
        print "$args[0] ++ = $r0;
        push @stack, $r;
    }
} elsif ($_ eq "--") { #primitive predecessor
    if ($#stack < 0) {
        print "not enough arguments0;
    } else {
        $args[0] = pop @stack;
        $r = $primitive->call('pred', @args);
        print "$args[0] -- = $r0;
        push @stack, $r;
    }
} elsif ($_ eq "=") { #primitive iszero
    if ($#stack < 0) {
        print "not enough arguments0;
    } else {
        $args[0] = pop @stack;
        $r = $primitive->call('iszero', @args);
        print "$args[0] == 0 = $r0;
        push @stack, $r;
    }
} elsif ($_ eq "p") { #pop stack
    pop @stack;
} elsif ($_ eq "c") { #clear stack
    @stack = ();
} elsif ($_ eq "q") { #stop
    last;
}
}
```

The basic operations client/server can be implemented as follows.

```
use Frontier::Daemon;
use Frontier::Client;
my $primitive = Frontier::Client->new(
    url => "http://localhost:1080/RPC2",
    debug => 0,
);
my $d = Frontier::Daemon->new(
    methods => {
        add => \&add,
        subtract => \&subtract,
    },
    LocalAddr => 'localhost',
    LocalPort => 1081,
    ReuseAddr => 1,
);
sub add {
    my ($arg1, $arg2) = @_;
    while (! $primitive->call('iszero', $arg2)) {
        $arg1 = $primitive->call('succ', $arg1);
        $arg2 = $primitive->call('pred', $arg2);
    }
    return $arg1;
}
sub subtract {
    my ($arg1, $arg2) = @_;
    while (! $primitive->call('iszero', $arg2) &&
        ! $primitive->call('iszero', $arg1)) {
        $arg1 = $primitive->call('pred', $arg1);
        $arg2 = $primitive->call('pred', $arg2);
    }
    return $arg1;
}
```

The complex operations client/server can be implemented as follows.

```
use Frontier::Daemon;
```

```
use Frontier::Client;
my $primitive = Frontier::Client->new(
    url => "http://localhost:1080/RPC2",
    debug => 0,
);
my $basic = Frontier::Client->new(
    url => "http://localhost:1081/RPC2",
    debug => 0,
);
my $d = Frontier::Daemon->new(
    methods => {
        mul => \&multiply,
        div => \&divide,
    },
    LocalAddr => 'localhost',
    LocalPort => 1082,
);
sub multiply {
    my ($arg1, $arg2) = @_;
    my $r;
    $r = 0;
    while (! $primitive->call('iszero', $arg2)) {
        $r = $basic->call('add', ($r, $arg1));
        $arg2 = $primitive->call('pred', $arg2);
    }
    return $r;
}
sub lessthan {
    my $arg1 = shift;
    my $arg2 = shift;
    my $r;
    $r = $basic->call('subtract', $arg2, $arg1);
    $r = $primitive->call('iszero', $r);
    return $r == 0 ? 1 : 0;
}
sub divide {
    my ($arg1, $arg2) = @_;
    my $r = 0;
    if (! $primitive->call('iszero', $arg2)) {
        while (! lessthan($arg1, $arg2)) {
            $arg1 = $basic->call('subtract', ($arg1, $arg2));
            $r = $primitive->call('succ', $r);
        }
    }
    return $r;
}
```

Electronic Reports Series of the Programming Research Group

Within this series the following reports appeared.

- [PRG0907] J.A. Bergstra and C.A. Middelburg, *Inversive Meadows and Divisive Meadows*, Programming Research Group - University of Amsterdam, 2009.
- [PRG0906] J.A. Bergstra and C.A. Middelburg, *Instruction Sequence Notations with Probabilistic Instructions*, Programming Research Group - University of Amsterdam, 2009.
- [PRG0905] J.A. Bergstra and C.A. Middelburg, *A Protocol for Instruction Stream Processing*, Programming Research Group - University of Amsterdam, 2009.
- [PRG0904] J.A. Bergstra and C.A. Middelburg, *A Process Calculus with Finitary Comprehended Terms*, Programming Research Group - University of Amsterdam, 2009.
- [PRG0903] J.A. Bergstra and C.A. Middelburg, *Transmission Protocols for Instruction Streams*, Programming Research Group - University of Amsterdam, 2009.
- [PRG0902] J.A. Bergstra and C.A. Middelburg, *Meadow Enriched ACP Process Algebras*, Programming Research Group - University of Amsterdam, 2009.
- [PRG0901] J.A. Bergstra and C.A. Middelburg, *Timed Tuplix Calculus and the Wesseling and van den Berg Equation*, Programming Research Group - University of Amsterdam, 2009.
- [PRG0814] J.A. Bergstra and C.A. Middelburg, *Instruction Sequences for the Production of Processes*, Programming Research Group - University of Amsterdam, 2008.
- [PRG0813] J.A. Bergstra and C.A. Middelburg, *On the Expressiveness of Single-Pass Instruction Sequences*, Programming Research Group - University of Amsterdam, 2008.
- [PRG0812] J.A. Bergstra and C.A. Middelburg, *Instruction Sequences and Non-uniform Complexity Theory*, Programming Research Group - University of Amsterdam, 2008.
- [PRG0811] D. Staudt, *A Case Study in Software Engineering with PSF: A Domotics Application*, Programming Research Group - University of Amsterdam, 2008.
- [PRG0810] J.A. Bergstra and C.A. Middelburg, *Thread Algebra for Poly-Threading*, Programming Research Group - University of Amsterdam, 2008.
- [PRG0809] J.A. Bergstra and C.A. Middelburg, *Data Linkage Dynamics with Shedding*, Programming Research Group - University of Amsterdam, 2008.
- [PRG0808] B. Dierkens, *A Process Algebra Software Engineering Environment*, Programming Research Group - University of Amsterdam, 2008.
- [PRG0807] J.A. Bergstra, S. Nolst Trenite, and M.B. van der Zwaag, *Tuplix Calculus Specifications of Financial Transfer Networks*, Programming Research Group - University of Amsterdam, 2008.
- [PRG0806] J.A. Bergstra and C.A. Middelburg, *Data Linkage Algebra, Data Linkage Dynamics, and Priority Rewriting*, Programming Research Group - University of Amsterdam, 2008.
- [PRG0805] J.A. Bergstra, S. Nolst Trenite, and M.B. van der Zwaag, *UvA Budget Allocatie Model*, Programming Research Group - University of Amsterdam, 2008.
- [PRG0804] J.A. Bergstra and C.A. Middelburg, *Thread Algebra for Sequential Poly-Threading*, Programming Research Group - University of Amsterdam, 2008.
- [PRG0803] J.A. Bergstra and C.A. Middelburg, *Thread Extraction for Polyadic Instruction Sequences*, Programming Research Group - University of Amsterdam, 2008.
- [PRG0802] A. Barros and T. Hou, *A Constructive Version of AIP Revisited*, Programming Research Group - University of Amsterdam, 2008.

- [PRG0801] J.A. Bergstra and C.A. Middelburg, *Programming an Interpreter Using Molecular Dynamics*, Programming Research Group - University of Amsterdam, 2008.
- [PRG0713] J.A. Bergstra, A. Ponse, and M.B. van der Zwaag, *Tuplix Calculus*, Programming Research Group - University of Amsterdam, 2007.
- [PRG0712] J.A. Bergstra, S. Nolst Trenite, and M.B. van der Zwaag, *Towards a Formalization of Budgets*, Programming Research Group - University of Amsterdam, 2007.
- [PRG0711] J.A. Bergstra and C.A. Middelburg, *Program Algebra with a Jump-Shift Instruction*, Programming Research Group - University of Amsterdam, 2007.
- [PRG0710] J.A. Bergstra and C.A. Middelburg, *Instruction Sequences with Dynamically Instantiated Instructions*, Programming Research Group - University of Amsterdam, 2007.
- [PRG0709] J.A. Bergstra and C.A. Middelburg, *Instruction Sequences with Indirect Jumps*, Programming Research Group - University of Amsterdam, 2007.
- [PRG0708] B. Diertens, *Software (Re-)Engineering with PSF III: an IDE for PSF*, Programming Research Group - University of Amsterdam, 2007.
- [PRG0707] J.A. Bergstra and C.A. Middelburg, *An Interface Group for Process Components*, Programming Research Group - University of Amsterdam, 2007.
- [PRG0706] J.A. Bergstra, Y. Hirschfeld, and J.V. Tucker, *Skew Meadows*, Programming Research Group - University of Amsterdam, 2007.
- [PRG0705] J.A. Bergstra, Y. Hirschfeld, and J.V. Tucker, *Meadows*, Programming Research Group - University of Amsterdam, 2007.
- [PRG0704] J.A. Bergstra and C.A. Middelburg, *Machine Structure Oriented Control Code Logic (Extended Version)*, Programming Research Group - University of Amsterdam, 2007.
- [PRG0703] J.A. Bergstra and C.A. Middelburg, *On the Operating Unit Size of Load/Store Architectures*, Programming Research Group - University of Amsterdam, 2007.
- [PRG0702] J.A. Bergstra and A. Ponse, *Interface Groups and Financial Transfer Architectures*, Programming Research Group - University of Amsterdam, 2007.
- [PRG0701] J.A. Bergstra, I. Bethke, and M. Burgess, *A Process Algebra Based Framework for Promise Theory*, Programming Research Group - University of Amsterdam, 2007.
- [PRG0610] J.A. Bergstra and C.A. Middelburg, *Parallel Processes with Implicit Computational Capital*, Programming Research Group - University of Amsterdam, 2006.
- [PRG0609] B. Diertens, *Software (Re-)Engineering with PSF II: from architecture to implementation*, Programming Research Group - University of Amsterdam, 2006.
- [PRG0608] A. Ponse and M.B. van der Zwaag, *Risk Assessment for One-Counter Threads*, Programming Research Group - University of Amsterdam, 2006.
- [PRG0607] J.A. Bergstra and C.A. Middelburg, *Synchronous Cooperation for Explicit Multi-Threading*, Programming Research Group - University of Amsterdam, 2006.
- [PRG0606] J.A. Bergstra and M. Burgess, *Local and Global Trust Based on the Concept of Promises*, Programming Research Group - University of Amsterdam, 2006.
- [PRG0605] J.A. Bergstra and J.V. Tucker, *Division Safe Calculation in Totalised Fields*, Programming Research Group - University of Amsterdam, 2006.
- [PRG0604] J.A. Bergstra and A. Ponse, *Projection Semantics for Rigid Loops*, Programming Research Group - University of Amsterdam, 2006.
- [PRG0603] J.A. Bergstra and I. Bethke, *Predictable and Reliable Program Code: Virtual Machine-based Projection Semantics (submitted for inclusion in the Handbook of Network and Systems Administration)*, Programming Research Group - University of Amsterdam, 2006.

- [PRG0602] J.A. Bergstra and A. Ponse, *Program Algebra with Repeat Instruction*, Programming Research Group - University of Amsterdam, 2006.
- [PRG0601] J.A. Bergstra and A. Ponse, *Interface Groups for Analytic Execution Architectures*, Programming Research Group - University of Amsterdam, 2006.
- [PRG0505] B. Dierkens, *Software (Re-)Engineering with PSF*, Programming Research Group - University of Amsterdam, 2005.
- [PRG0504] P.H. Rodenburg, *Piecewise Initial Algebra Semantics*, Programming Research Group - University of Amsterdam, 2005.
- [PRG0503] T.D. Vu, *Metric Denotational Semantics for BPPA*, Programming Research Group - University of Amsterdam, 2005.
- [PRG0502] J.A. Bergstra, I. Bethke, and A. Ponse, *Decision Problems for Pushdown Threads*, Programming Research Group - University of Amsterdam, 2005.
- [PRG0501] J.A. Bergstra and A. Ponse, *A Bypass of Cohen's Impossibility Result*, Programming Research Group - University of Amsterdam, 2005.
- [PRG0405] J.A. Bergstra and I. Bethke, *An Upper Bound for the Equational Specification of Finite State Services*, Programming Research Group - University of Amsterdam, 2004.
- [PRG0404] J.A. Bergstra and C.A. Middelburg, *Thread Algebra for Strategic Interleaving*, Programming Research Group - University of Amsterdam, 2004.
- [PRG0403] B. Dierkens, *A Compiler-projection from PGLec.MSPio to Parrot*, Programming Research Group - University of Amsterdam, 2004.
- [PRG0402] J.A. Bergstra and I. Bethke, *Linear Projective Program Syntax*, Programming Research Group - University of Amsterdam, 2004.
- [PRG0401] B. Dierkens, *Molecular Scripting Primitives*, Programming Research Group - University of Amsterdam, 2004.
- [PRG0302] B. Dierkens, *A Toolset for PGA*, Programming Research Group - University of Amsterdam, 2003.
- [PRG0301] J.A. Bergstra and P. Walters, *Projection Semantics for Multi-File Programs*, Programming Research Group - University of Amsterdam, 2003.
- [PRG0201] I. Bethke and P. Walters, *Molecule-oriented Java Programs for Cyclic Sequences*, Programming Research Group - University of Amsterdam, 2002.

The above reports and more are available through the website: www.science.uva.nl/research/prog/

Electronic Report Series

Programming Research Group
Faculty of Science
University of Amsterdam

Kruislaan 403
1098 SJ Amsterdam
the Netherlands

www.science.uva.nl/research/prog/